



Interreg



Co-funded by
the European Union

South Baltic

The Regulatory Landscape for Environmentally Friendly Marinas A Practical Guide for Baltic Marina Administrators

Interreg South Baltic Program 2021-2027



Interreg



Co-funded by
the European Union

South Baltic

We are here to understand **what really matters** in daily marina operations.

- What inspectors actually look at.
- How to turn compliance into a competitive advantage.

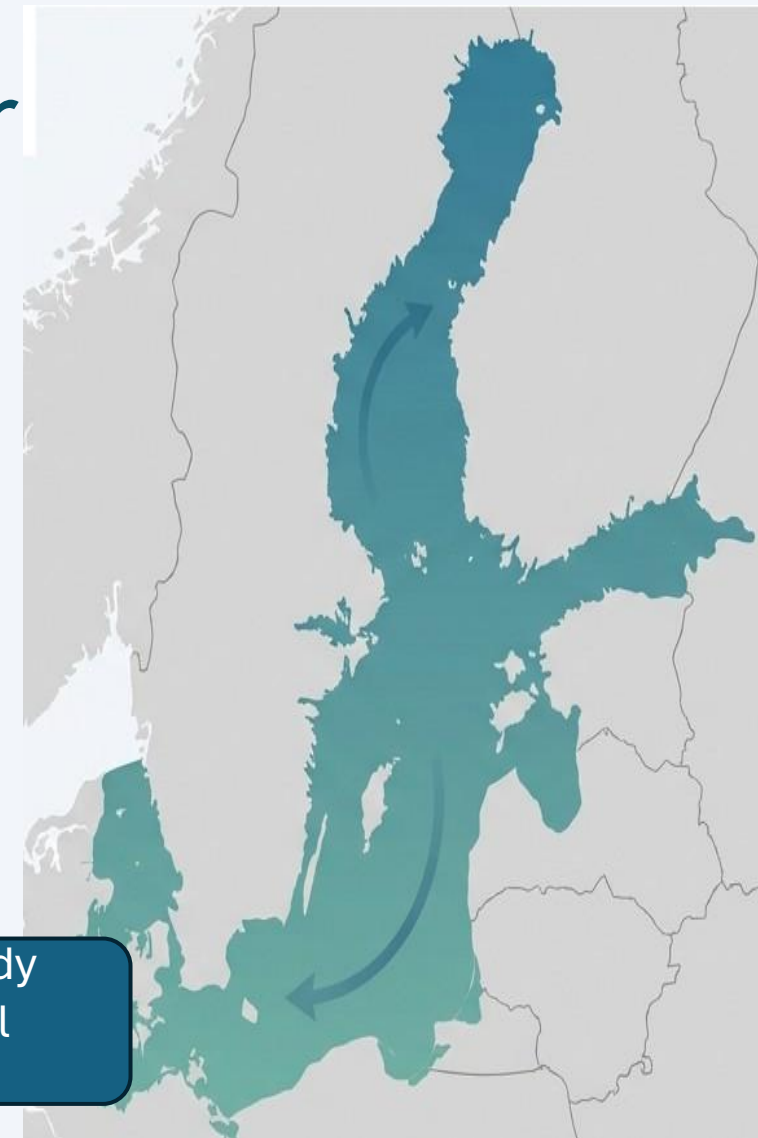
Everything presented today connects directly to **ECOMARINAS indicators** and real inspection practice.



Why Regulations Matter More in the Baltic Sea

- The Baltic is one of the world's most sensitive seas. Small pollution sources accumulate.
- **Marinas are not the biggest** polluters-but they are **highly visible** and easy to inspect.

Quick question: Who has already experienced an environmental inspection?





Interreg
South Baltic



Co-funded by
the European Union

How EU Law Reaches Your Marina's Dock.



EU: Sets the Goals



National Government:
Translates into Laws



Your Marina: Inspectors
check Permits,
Infrastructure & Behaviour

From an inspector's perspective, the marina manager is the final responsible person.

👉 If it is not visible or documented, it does not exist.



The Five Regulatory Pillars of Marina Operations

You don't need to remember the directive numbers - you need to remember **what inspectors associate with each pillar.**



Water
Protection



Waste
Management



Nature &
Habitats



Energy &
Climate



Fuels &
Chemicals



1. Water Protection: The #1 Priority in the Baltic



Broken
pump-out

No signs

Hoses discharging
into basin



Easy-access
pump-out

Clear multilingual
signage

Staff actively
informing boaters

✓ Indicator: *Wastewater & sewage management.*

✓ Evidence: Photos, maintenance logs, signage.



2. Waste Management: It's an Organisational Challenge



Mixed waste bins
Oil cans with household waste.
No labels → user confusion

✓ Indicator: *Waste infrastructure & sorting.*



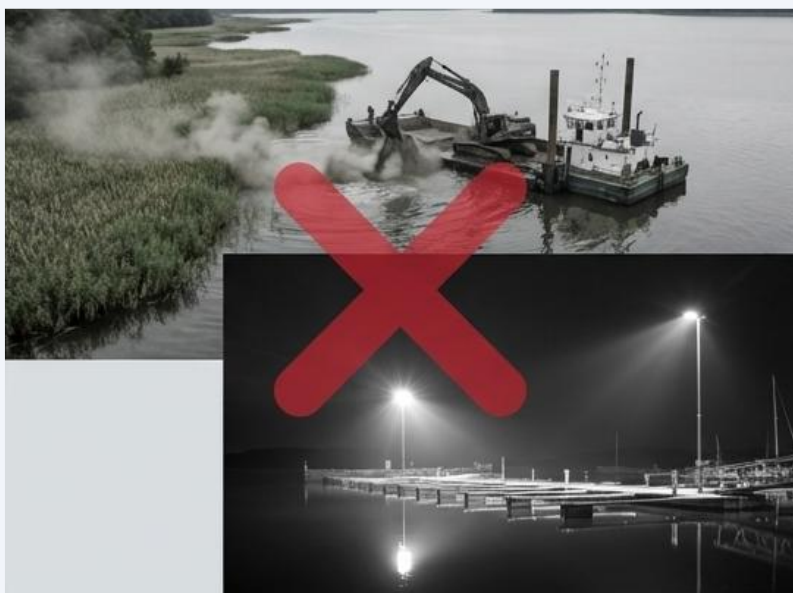
Clearly separated fractions, Locked
hazardous waste, Visual
instructions

✓ Inspector focus: Separation & clarity.



3. Nature Protection & Sensitive Areas.

Many Baltic marinas operate near protected areas, often without realising how strict the rules are.



Dredging without permits

Strong night lighting

Noise during breeding season

Seasonal work planning

Soft lighting

Early communication with authorities



✓ Indicator: *Biodiversity & habitat protection.*



4. Energy, Climate & Electrification.

Electrification is no longer future *talk* - *it is already expected.*



- Boats withholding engines
- No shore power
- No plan



- Shore power available
- Clear instructions
- Phased upgrade plan

✓ Indicator: *Energy efficiency & emissions.*



5. Fuels, Chemicals & Safety.

Inspectors often ask: "What happens if something spills?"



- No spill kits
- Staff unsure what to do



- Spill kits visible
- Staff trained
- Simple procedure posted

✓ Indicator: *Hazardous substances management.*



Inspections: What They **Really** Look For

Most penalties in Baltic marinas are not for pollution events, but for **missing documentation.**





- ✓ Procedures
- ✓ Training records
- ✓ Visual order
- ✓ Staff awareness



A clean, well-organised marina signals compliance before a single question is asked.



Compliance in the Real World of the Baltic

-  Ice & extreme weather
-  Short, intense seasonality
-  Aging infrastructure
-  Small, multi-tasking teams

Inspectors accept **step-by-step improvement**, but **they do not accept chaos.**

- ❖ Focus on small, visible improvements.
- ❖ Establish clear responsibility.
- ❖ Prioritise behaviour-focused actions.



Interreg

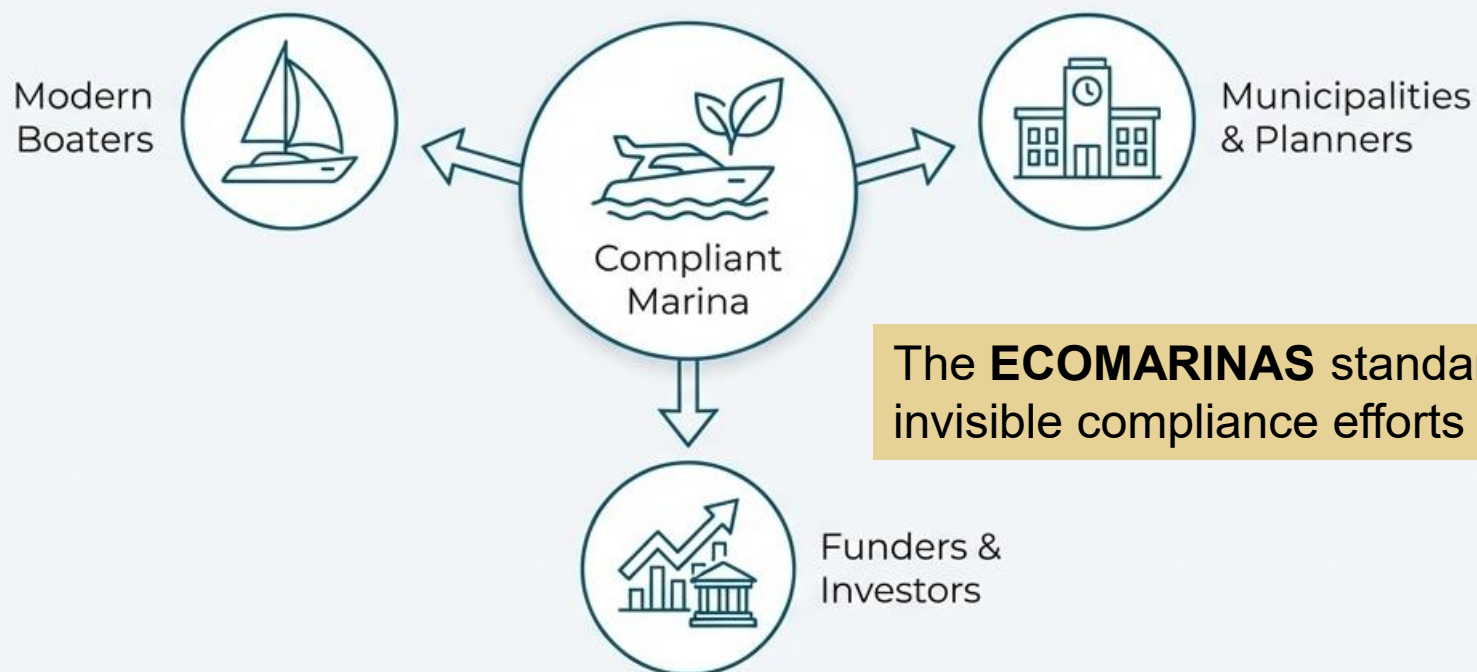
South Baltic



Co-funded by
the European Union

From Compliance Cost to Competitive Advantage

Environmentally compliant marinas are more attractive to:



The **ECOMARINAS** standard helps turn your invisible compliance efforts into visible value.



Interactive Reflection

Which of these areas causes the biggest headache in your marina?



Water Management



Waste & Spills



Energy & Infrastructure



User & Staff Behaviour



Interreg

South Baltic



Co-funded by
the European Union

Your Three Most Important Takeaways.

1

In the Baltic Sea region,
environmental compliance is not negotiable.

2

Daily practice matters more than written policies on a shelf.

3

Behaviour change is the cheapest and fastest improvement you can make.

Now, let's look at real Baltic marinas that made this work.



Interreg

South Baltic



Co-funded by
the European Union



Gdansk
Sports Centre



SELF-GOVERNMENT
OF THE POMORSKIE VOIVODESHIP



Klaipeda
University



SLOTTSHOLMEN
MARINA VÄSTERVIK

